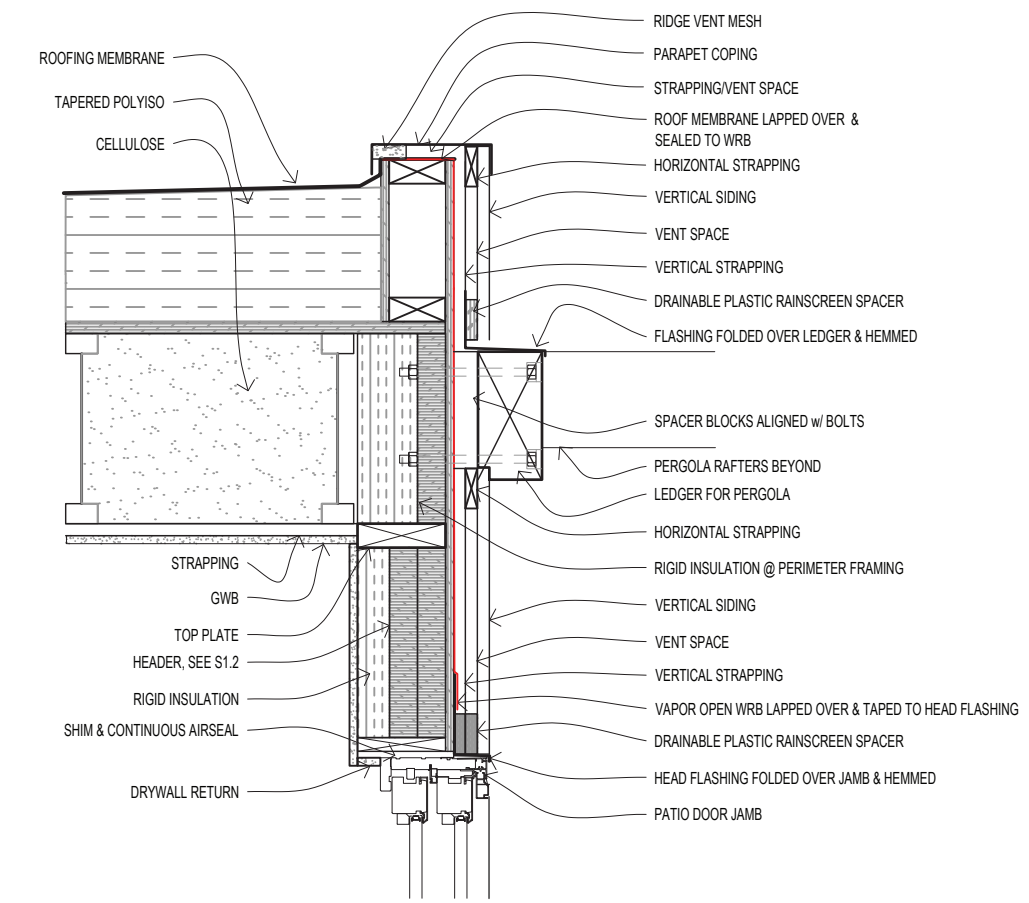
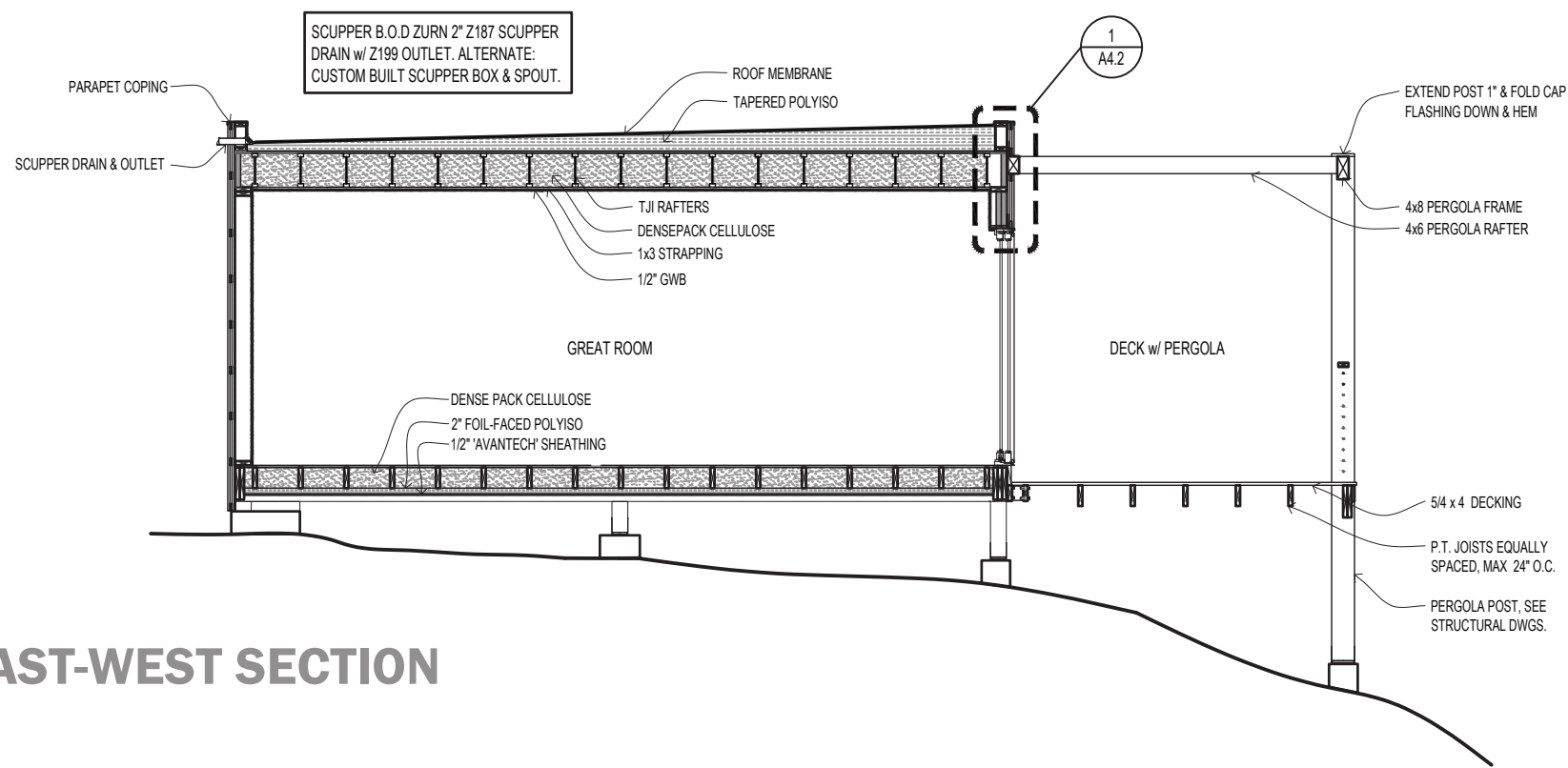


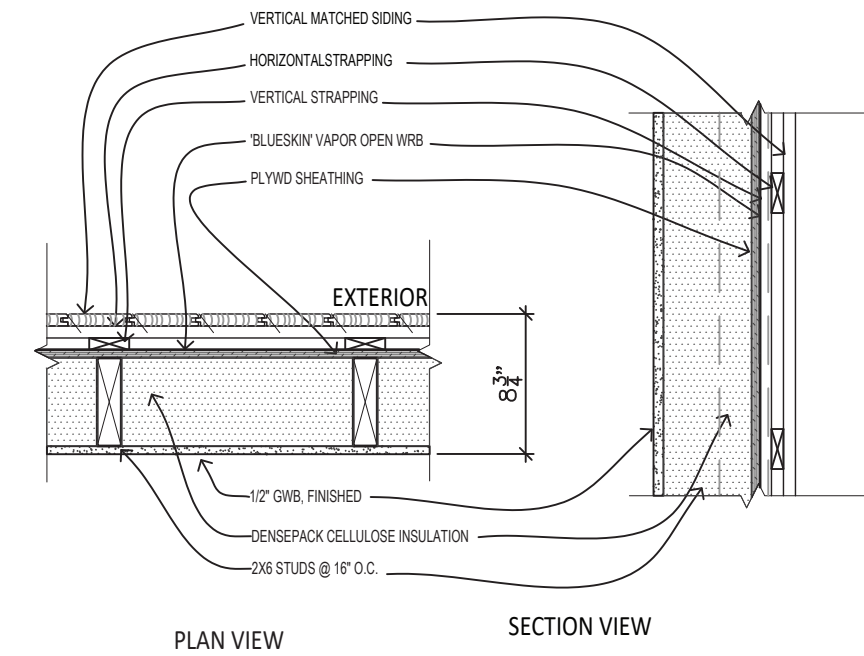
BREEZEWAY SECTION



TOP OF WALL DETAIL



EAST-WEST SECTION



EXTERIOR WALL ASSEMBLY

R-VALUE CALCULATIONS

- EXTERIOR WALLS: R-22
5 1/2" DENSE-PACK CELLULOSE INSULATION @ R-4/IN.
- ROOF: R-87
11" DENSE-PACK CELLULOSE INSULATION @ R-4/IN
TAPERED POLYISO AVERAGE THICKNESS 6" @ R-7.2/IN
- FLOOR: R-51
9 1/4" DENSE-PACK CELLULOSE @ R-4/IN.
2" POLYISOCYANURATE @ R-7.2/IN.

SEALING OF BUILDING ENVELOPE

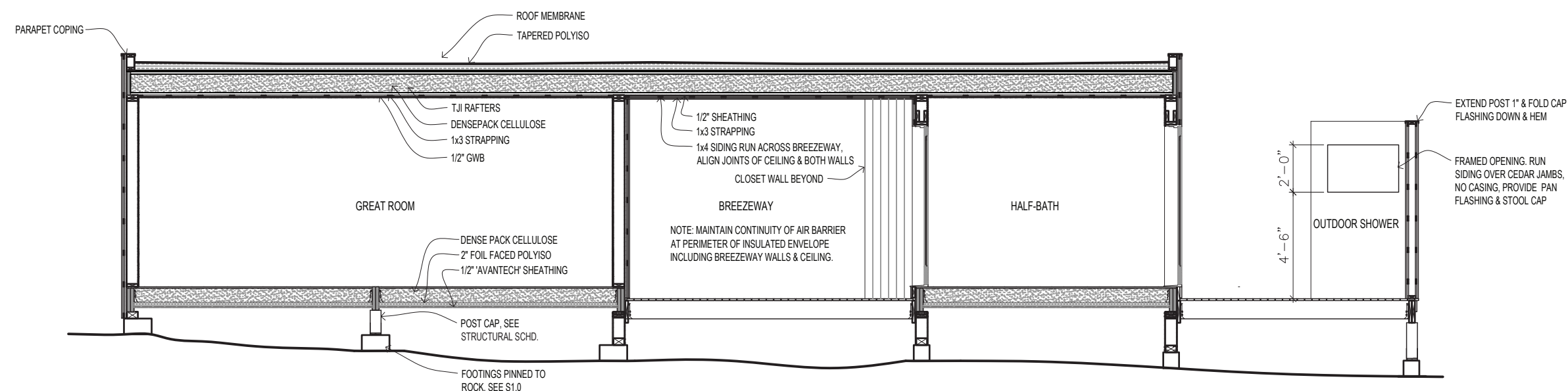
EXTERIOR OPENINGS, JOINTS, CRACKS, & HOLES IN THE BUILDING ENVELOPE TAPED, CAULKED, GASKETED, WEATHERSTRIPPED, OR OTHERWISE SEALED WITH A FLEXIBLE MATERIAL TO LIMIT AIR LEAKAGE.

PENETRATIONS IN INSULATING MATERIALS PROPERLY SEALED.

AREAS TO BE SEALED INCLUDE BUT NOT LIMITED TO THE FOLLOWING:

- AROUND WINDOW & DOOR FRAMES.
- UNDER THRESHOLDS.
- BETWEEN WALL ASSEMBLIES AND THEIR SILL PLATES & FOUNDATIONS.
- WHERE METAL & CONCRETE OR METAL & MASONRY ASSEMBLIES MEET.
- OPENINGS FOR PLUMBING, ELECTRICAL WIRING, AIR DUCTS, REFRIGERANT, & GAS LINES IN EXTERIOR WALLS, FLOORS, & CEILINGS.
- SERVICE AND ACCESS DOORS & HATCHES.
- RECESSED LIGHTING FIXTURES.
- JOINTS BETWEEN EXTERIOR AND INTERIOR WALLS

BUILDING ENVELOPE NOTES



NORTH-SOUTH SECTION

Woods and Water Sections and Details

N.T.S